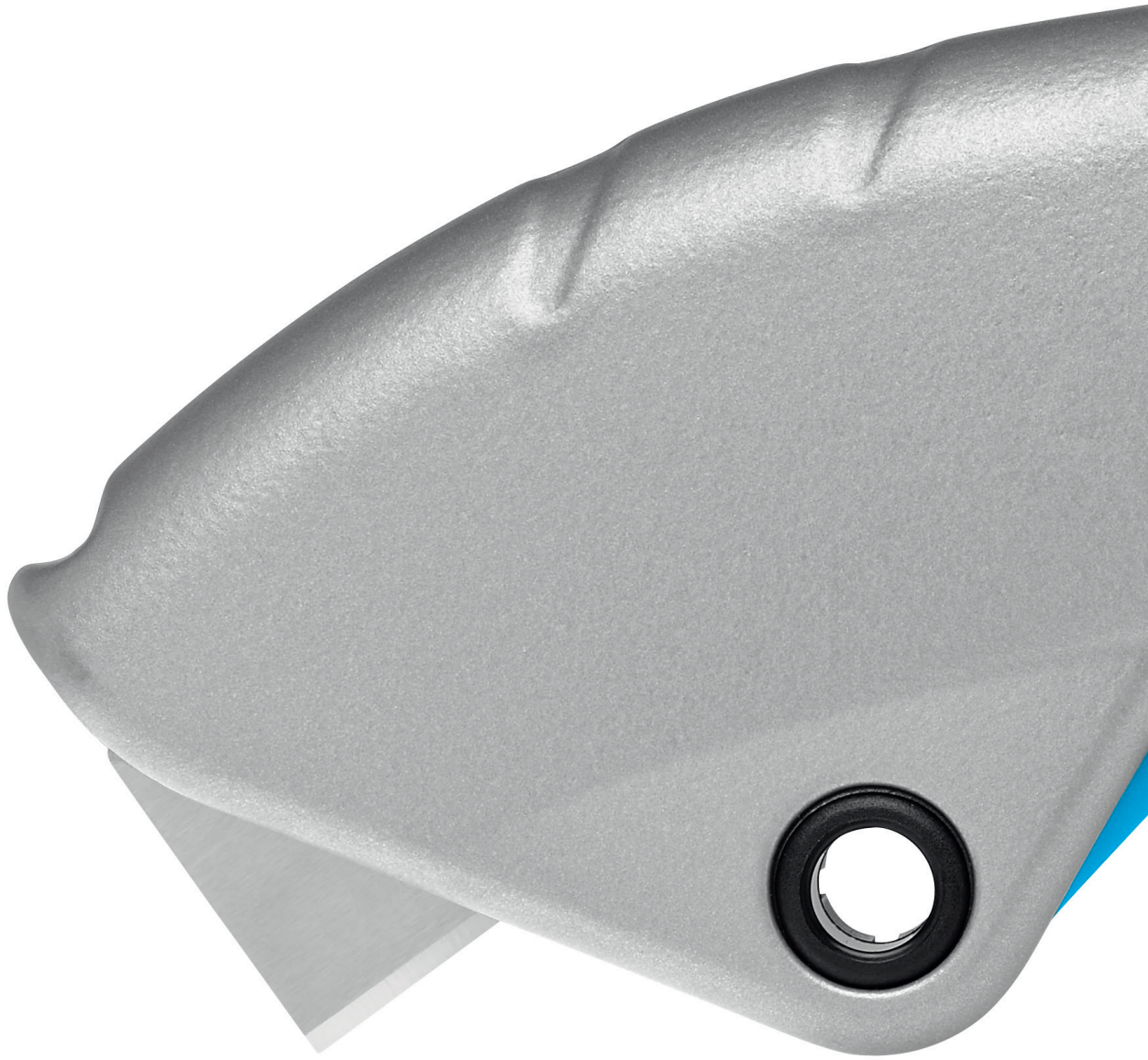


SECUPRO MARTEGO
ALMOST TOO GOOD TO BE TRUE!



ENJOY SAFETY
MADE IN SOLINGEN

martor

SECUPRO MARTEGO

NO. 122001



Original size



Perfect handling

The advantages of the SECUPRO MARTEGO lie in your hands. The curved and lockable housing, the soft-grip for better handling, the "pre-set" cutting edge; these three factors guarantee an ergonomic experience.



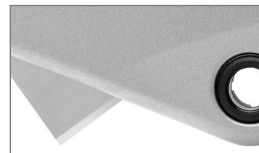
4-edged blade

The Solingen quality blade, with its four sharp edges, can be rotated multiple times. It's worth it! In the meantime, a relatively small cutting depth protects your goods from unnecessary damage.



Change safely

When you need to change the blade, you can do so without any additional tools. Here, the "pull" of the SECUPRO MARTEGO is revealed: the integrated magnet ensures that the blade cannot fall out.



Everything under control

It's all about aluminium. The powder-coated metal body does not only contribute to the SECUPRO MARTEGO's extraordinary design. It credits the cutter with extreme robustness and durability.



Blade lock for extra protection

Your SECUPRO MARTEGO accompanies you on your job at every cut and turn? Glad to hear it. But always press the blue activator when you've finished cutting! This way the blade cannot make a surprise appearance.

For highest demands.

A cutting tool in which function and design go hand in hand? Meet SECUPRO MARTEGO, our prize winning lockable cutter with fully automatic blade retraction. Get used to the word "very" in its presence: it's very safe, very robust, very ergonomic, very versatile, and made to very high standards. This cutter is not only suitable for both right and left-handed users, but also for those with larger hands.

PRODUCT FEATURES

Technical features

	Very high safety		Safer blade change (with magnet)
	Tool-less blade change		Very abrasion resistant
	Very ergonomic		Safety lock
	4-times usable blade		Extended blade length
	Cutting depth		Soft-grip
	For right and left hander		Printable for promotional purposes

Main cutting materials

	Cardboard: up to 2-ply		Plastic strapping band
	Tape		Slabbing material off a roll
	Wrapping, stretch, and shrink foil		Layers of foil or paper

Installed blade

	NO. 92	0.40 mm, deep-edged
--	---------------	---------------------

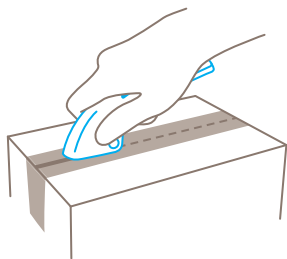
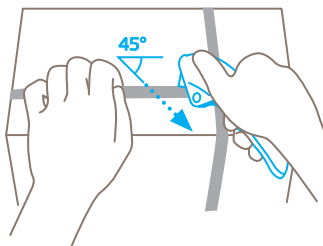
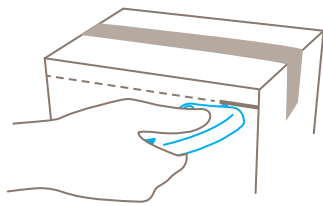
Optional blade

	NO. 192	0.40 mm, deep-edged, stainless steel
--	----------------	--------------------------------------

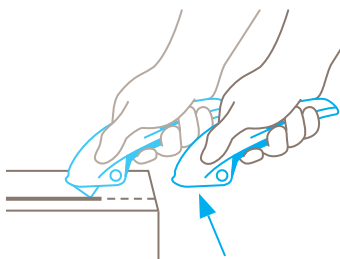
Certificates and awards



Application



Safety technology



Fully automatic blade retraction – a very high degree of safety





The fully automatic blade retraction of the SECUPRO MARTEGO guarantees a very high degree of safety from cut injuries. The blade withdraws into the handle immediately after leaving the material being cut. Even when the lever is still being squeezed.

THE PERFECT FIT FOR ALL. DOES THE PERFECT JOB.

SECUPRO MARTEGO

- › Ergonomic squeeze-grip
- › Perfect for frequent application
- › Fully automatic blade retraction
- › Well made and cleverly designed, featuring soft-grip
- › TÜV-certified

PRODUCT DETAILS

Order No.	NO. 122001.02
Packaging unit	1 in single unit box (10 in multipack)
Knife size (L x W x H)	155 x 18 x 48.5 mm
Main material	Aluminium
Weight	105.0 g
Cutting depth	9 mm
Spare blade Packaging unit Size (L x W x Thickness)	NO. 92.66 (10 in safety dispenser) 26 x 18.5 x 0.40 mm
Certified	GS certificate NO. S 60077225
Accessories	
BELT HOLSTER M WITH CLIP	 NO. 9921
USED BLADE CONTAINER	 NO. 9810
WALL MOUNT BRACKET USED BLADE CONTAINER	 NO. 9845
SAFEBOX	 NO. 108000

CONTACT AND SERVICE

What makes our cutting solutions even safer? Our advisory services! We are always on hand, to give advice, to provide you with training material, to meet with you in person if necessary.

You will find further information on our website:
www.martor.com



At a glance: the safety poster shows the most important functions and correct usage – perfect for your workplace.



From the first cut to changing the blade, our video will show you the best way to use this knife.



Everything you want to know: dimensions, properties, special features and more about our cutting tools can be found in the Technical Data Sheet.



Still have questions? You can reach our service department on [+49 212 73870-0](tel:+49212738700)